

THE PRESIDENTS

Since the formation of the association in 1922 there have been 22 individuals who have held the office of President, most serving the three year term currently prescribed by the constitution. The photo below is of the eleven still active in the Association

Robert Richmond , September 2019

The Presidents XI

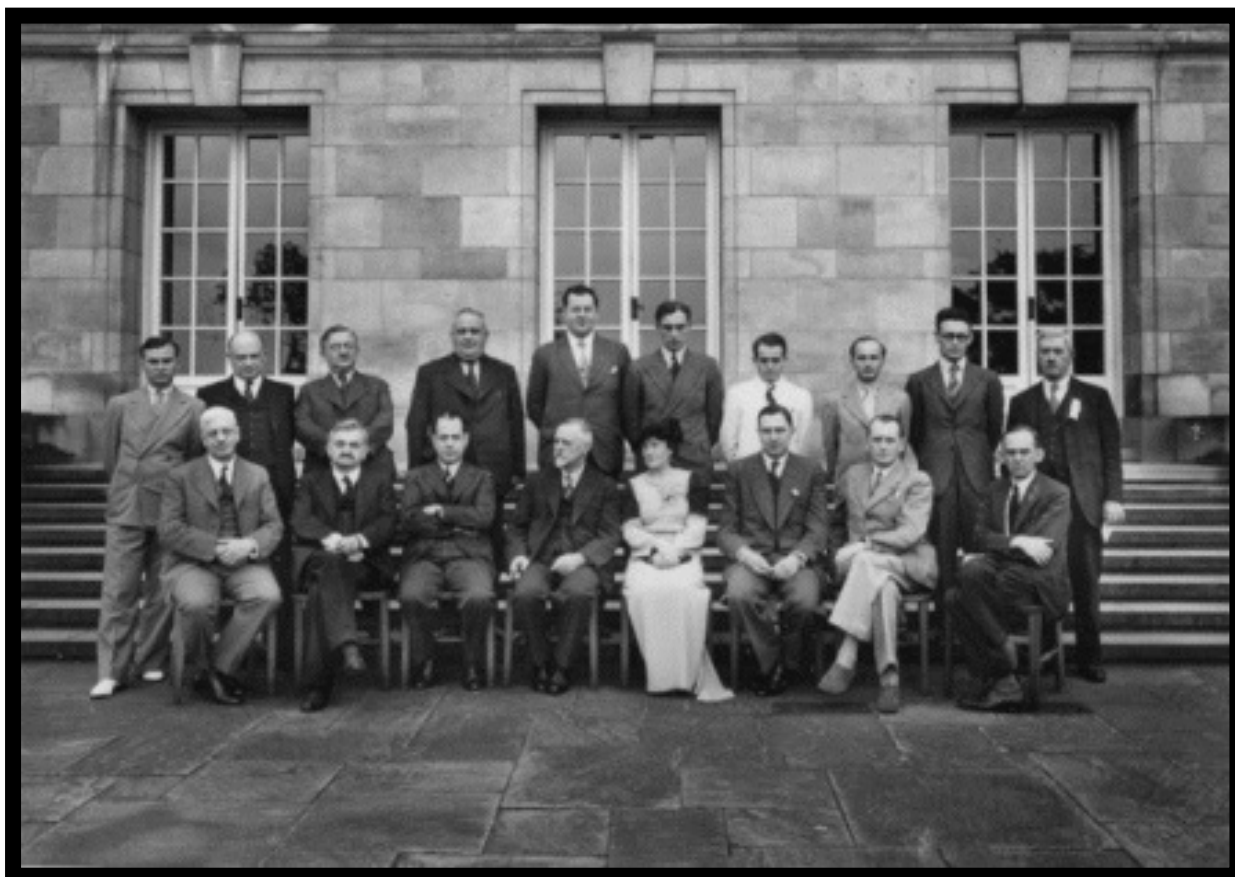


Top Row: Michael Barnes , Tim Walker , John Swain , Brian Hayward , David Levens

Bottom Row: Neil Graham , Andrew Walker , Ray Sayer , Shane Bhayat , Robert Richmond

Inset: Michael Nailard

1. Alderman Job Nightingale Derbyshire, JP 1922-54



J.N.Derbyshire is on the middle of the front row, next to his wife. But who are all these other folks? Are any of them any good? And what are they doing cluttering up a photo of JND?

President 1922-54	(32)	
MCCU Delegate	(1)	Total 33

Donated County Individual Championship Trophy (Silver Rook) 1923

Donated County Junior Championship Shield 1926

Donated League Trophy – Board + Set 1934

Chief sponsor of Nottingham 1936

FIDE Life Member

Chairman British Chess Federation Executive Committee 1938-41

President British Chess Federation 1941-50

President Midland Counties Chess Union [dates]

Member of Nottinghamshire County Council 1922-29

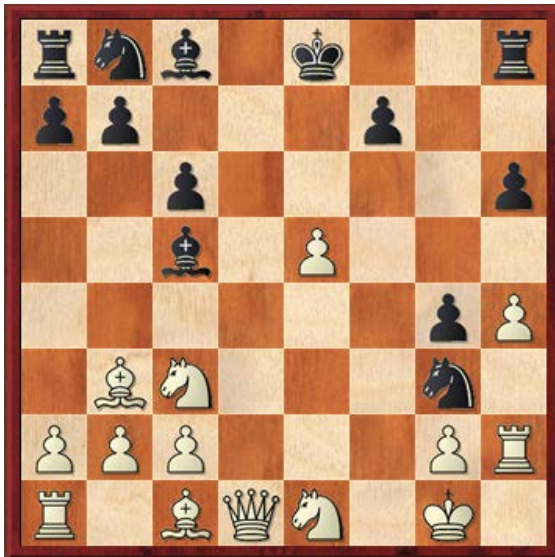
Alderman of Nottinghamshire County Council 1929-46

High Sheriff of Nottinghamshire 1942-43

E Marriott – J N Derbyshire

1.e4 e5 2.f4 exf4 3.Bc4 d5 4.Bxd5
Qh4+ 5.Kf1 Nf6 6.Nf3 Qh5 7.Nc3 c6
8.Bb3 g5 9.h4 h6 10.Kg1 g4 11.Ne1
Be7 12.d4 f3 13.e5

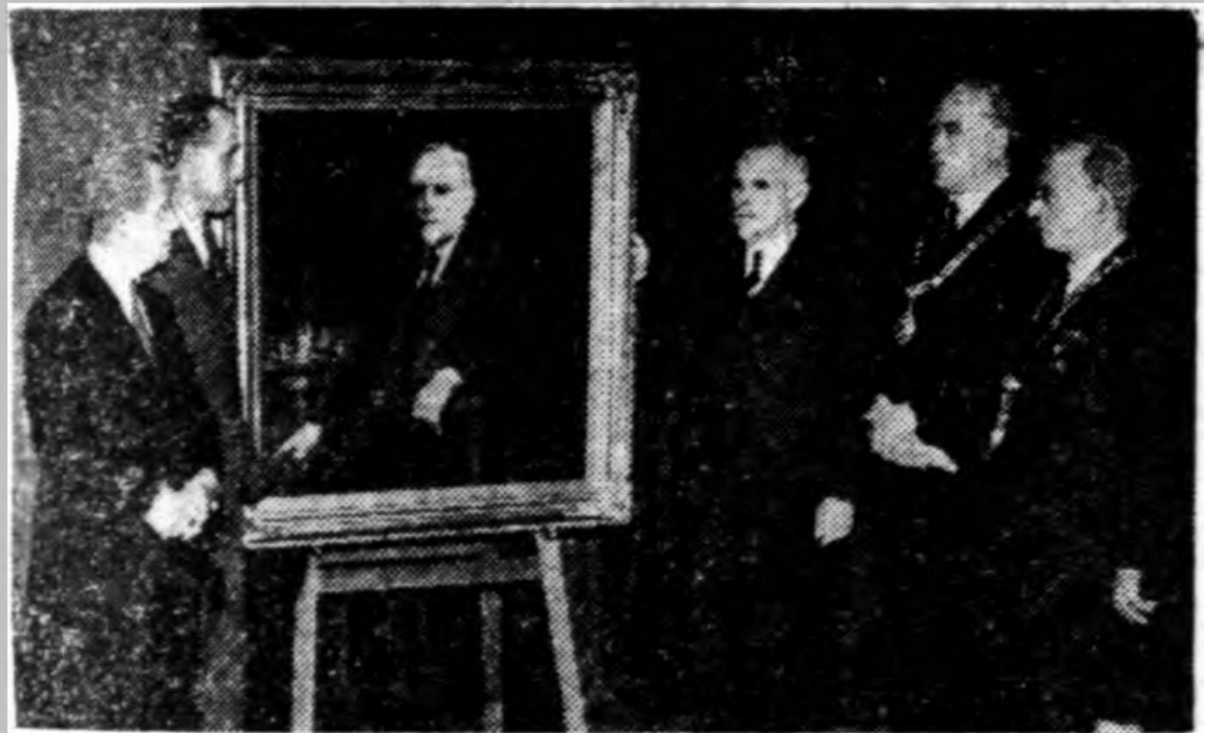
13...f2+ 14 Kxf2 Ne4+! 15.Kg1
15.Nxe4 g3+ drops the queen Ng3
16.Rh2 Qxe5 17.dxe5? Bc5+ 0-1



One final thought. The 1932-33 Yearbook names J W Broadbent as the leader of the Mechanics members behind the creation of the Association. My guess (for which I have no direct evidence) is that the inspiration to form an Association came from JND. He was not free of his war-time work and back full-time in Nottingham until 1920, so the timing is suggestive. The donation of the silver rook is a very emphatic gesture of his support. Things in life had the happy knack of turning out exactly the way he wanted. And of course he became the first President. For the rest of his life.

2. R Shaw 1955-61

The BCF Yearbooks list R.Shaw as President. I think this is Robert Shaw, Lord Mayor of Nottingham 1946-47. and there is a Primary School named after him. There is no direct proof, but there is good circumstantial evidence. Robert Shaw died 29th January 1961 which is exactly right. He was President of Nottingham Mechanics and may very well have been a member of the chess section. As mayor he was a friend of chess, as the photo below illustrates.



At the Nottingham Chess Congress, which opened at the Nottingham University College, Highfields, to-day, Mr. J. N. Derbyshire (on right), president of the British Chess Federation, and 80 years old to-day, receiving a portrait of himself from Mr. B. Cirket (hon. secretary), on behalf of the members of the Notts. Chess Association, in appreciation of his services. The Lord Mayor and Sheriff, who opened the congress, are on right, and on extreme left Mr. A. Spooner, who painted the portrait.

The photo is all about J.N.Derbyshire (JND), but Robert Shaw is second from the right. [Note also B.Cirket , County Champion 1942 and 1944 is second left. The portrait was hung at the Mechanics Institute. I don't know what became of it.]

In December 1946 JND brought the BCF Council Meeting to Nottingham. The City Council were hosts, with Robert Shaw presiding. This included an entertainment laid on in the evening – something unique in the history of the Federation.

There are a number of striking similarities between JND and Robert Shaw. If the Association was looking for the nearest thing to a direct replacement for JND then it would have him. Both were wealthy Company Directors. Robert Shaw & Co , hosiery manufacturers, was founded in 1908 and went public in 1928. Both had long careers of public service. Robert Shaw retired from the City Council in 1950 after 21 years, including 11 as an Alderman. JND was High Sheriff of Nottinghamshire 1942-43. Robert Shaw was Lord Mayor in 1946-47. And both died in office, aged 87.

However there is no direct proof that President R.Shaw and Mayor Robert Shaw are the same person. If Robert Shaw was President then the Association would have been represented at the funeral. As luck would have it the microfiche of the Guardian Journal report , which lists those attending, is illegible and end January/early February 1961 is on of the few periods where there is no microfiche available for the Nottingham Evening Post. More research needed!

3. H H L Levene 1962-65

4. Peter Dodson 1965-68

Nottinghamshire County Champion	1958	
Honorary Life Vice-President		
President	1965-68 (3)	
Secretary	1959-63 (4)	Total 7
British Correspondence Champion	1964	

Gary Lane – Peter Dodson

Ward-Higgs

1.e4 e6 2.d4 d5 3.Nd2 Nf6 4.e5 Nfd7 5.c3 c5 6.f4 Nc6 7.Ndf3 This

move leads to a variation where white sacrifices his chances of castling in order to form a strong centre with more space. As it happens, I had played Gary Lane two years previously and lost in this same variation. He admitted wondering what improvement I thought I had found **7...cxd4** I think it is important to get Bb4+ in before white can play Kf1 instead of f2 where it is potentially liable to

attack via d4 or b2 **8.cxd4 Bb4+**
9.Kf2 f6 10.g3 fxe5 11.fxe5 Qb6
12.Kg2 O-O 13.Bd3



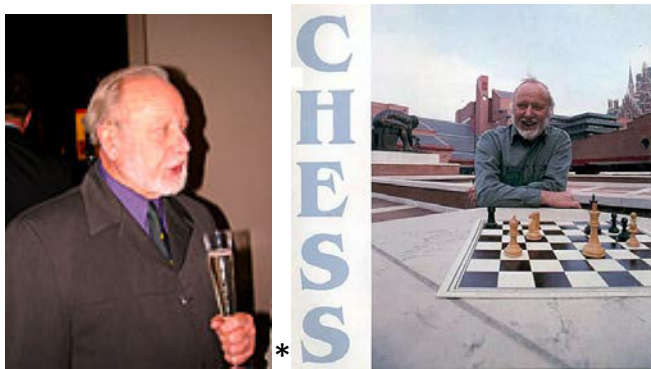
13...Nxd4 14.Nxd4 Nxe5 15.Bf4 So far the game follows the earlier one;

in that game I played Bd6 overlooking the strength of Bxh7+ **Nxd3 16.Qxd3 Bd6** Threatening e5 , Qxb2 and Bxf4. White exchanges to solve these problems **17.Bxd6 Qxd6 18.Ngf3 e5 19.Nb5 Qb6 20.Qxd5+** 20...Nxe5? 21.Qf2 mate**21... Be6 21.Qd6** If 21.Qd3 Rad8 22.Qe2 Rxf3 etc**22.Qxd6 22.Nxd6 Bd5 23.Rhf1 Rad8**



24.Kg1 White did not like Nb5 when either Bc6, Bc4 or e4 will be awkward to meet **24...Bxf3 25.Nc4 Be2 26.Rxf8+ Kxf8 27.Nxe5 Rd5 28.Re1** Hoping to regain the piece by Kf2 after Re5 **28...Rxe5 0-1** If 29.Kf2 Rh5 30. R or K xe2 Rxh2+ and Black has a textbook win

5. Ken Whyld 1968-68



Nottinghamshire County Champion 1956, 1957, 1959, 1963

President 1968

Treasurer 1956-62 (6)

Donated U16 Shield 1964

Total 6

Fawcett, Edward Douglas -
 Whyld, Kenneth
 British CF-37 Major Open Buxton/
 Derbyshire (4), 24.08.1950
[Whyld, K]

"I particularly remember this game because here my opponent said 'Ah! Pillsbury played that against me'." (Ken Whyld in CHESS 1998/11) **10.Bc2 0-0 11.Qe2 f5 12.exf6 Rxf6 13.Be3**

1.e4 e5 2.Nf3 Nc6 3.Bb5 a6 4.Ba4 Nf6 5.0-0 Nxe4 6.d4 b5 7.Bb3 d5 8.dxe5 Be6 9.c3 Bc5



Bg4 14.Bxc5 Bxf3 15.gxf3 Rg6+ 16.Kh1 Qg5 Note: E D Fawcett was aged 84 in 1950, having been born in April 1866. Source: CHESS, November 1998. **0-1**

Jack Graham 1969-71



President 1969-71	(3)
Auditor 1960's	
Grader 1967-72	(5)
Treasurer 1978-81	(3)
BCF Delegate 1972-75	(3)
1 st Team Captain 1977-78	(1)
MCCU Delegate 1970-71, 1979-81	(4)
MCCU Treasurer 1970-76	

6. Raymond Sayer 1971-74



Honorary Life Vice-President	
President 1971-74	(3)
Corresp (MCCU) 1967-68	(1)
County Championship 1973-74	(1)
Total	(5)

Van Gemeren, Jan C (1600) -
 Sayer, Ray M (1780)
 ENG-ch Seniors Dovedale (5),
 01.02.2008

1.d4 Nf6 2.Nf3 e6 3.Bf4 b6 4.Nbd2 Bb7
 5.e3 Be7 6.Be2 0-0 7.c3 c5 8.Qc2 cxd4
 9.exd4 d5 10.Bd3 Bd6 11.Bg3 h6 12.Ne5
 Qc7 13.f4 Ba6 14.0-0 Bxd3 15.Qxd3 a6
 16.Bh4 Be7? [Correct was 16...Nbd7=]
 17.g4? [White missed his chance 17.f5!
 when all his pieces come into the attack.]
 17...Nxb4?!



[17...Nbd7 was still better.] **18.Bxe7??**
 Although white gets some compensation for a
 pawn, this hands the advantage to Ray, who
 sees it through to a clean win.

[This time white's only way to advantage was
 18.Nxb4! Bxh4 19.Qh3!! when he has a strong
 attack, but there's still a big fight ahead.]
18...Nxe5 19.fxe5 Qxe7 20.Rf2 f5 21.exf6
Rxf6 22.Raf1 Rxf2 23.Rxf2 Nd7 24.a4 a5
25.Qb5 Rf8 26.Rg2 Qh4 27.Rg3 Qe7 28.Qc6
Rf6 29.Qc7 Qf7 30.Rg2 Rf5 31.h3 e5 32.dxe5
Rxe5 33.Nf3



Now for a nice finish. **33...Qxf3!! 34.Qxd7**
Re1+ 35.Kh2 Qf4+ 36.Rg3 Re2+ 0-1

7. Dr. Andrew Walker 1974-77 & 2015-18



Nottinghamshire U18 Champion 1961

President 1974-76 , 2016-18	(6)
Grader 1962-67 ?	(5)
Secretary 1997-98 – 2011-12	(15)
Adjudications Sec 1973-74	(1)
MCCU Delegate 1989-1997	(8)
LMC 1980-1997	(17)
EC 2013-15, 2018-19	(4)
Total	52

A N Walker – B H Wood
 Nottingham Mechanics vs Sutton
 Coldfield, BPCF Team Championship
 1971

**1.e4 e5 2.Nf3 Nf6 3.d4 exd4 4.e5
 Ne4 5.Qe2** Qxd4 is more usual, and
 no doubt better **5...Bb4+** 5...Nc5 is
 level **6.Nbd2 Nxd2 7.Bxd2 Bc5 8.O-
 O-O Nc6** An immediate O-O is
 essential **9.Qe4**



Qe7 9...O-O runs into 10.Ng5 g6
 11.Qh4 h5 12.g4 with a strong
 attack **10.Bc4 d6** 10...O-O now runs
 into 11. Bg5 Qe8 12.Bd3 g6 (12...f5

13.Qd5+ wins a piece) 13.Bf6 with
 an equally strong attack **11.Bg5 f6**



12.exf6 gxf6 Perhaps surprisingly is
 better 12...Qxe4 13.fxg7 Rg8
 14.Rhe1 Qe6 when best seems to be
 15.Bh6 Ne5 or 15...Ke7 16.Ng5 Ne5
 17.Bxe6 Bxe6 18.f4 and wins,
 though not easily **13.Rhe1 fxe5** If
 13...Ne5 14.Nxe5 dxe5 15.Bxf6 Qxf6
 16.Qxe5+ Qxe5 17.Rxe5+ Be7
 18.Rde1 **14.Qd5** 1-0

8. Tom Guy 1977-79

President 1977-79	(2)	
Adjudications Secretary 1974-75	(1)	
League Secretary 1975-76	(1)	
Congress Director 1976-79	(3)	Total 8

T.Guy – A Walters (Kent) , Ward-Higgs
1986-87

**1.e4 c6 2.Qe2 d5 3.d3 dxe4 4.dxe4 e5
5.g3 Nf6 6.Bg2 Bc5 7.Nf3 Nbd7 8.O-O O-O
9.b3 Qe7 10.Bb2 b5 11.Nh4 Re8 12.Nf5
Qf8 13.Nd2 a5 14.c4 b4 15.h3 g6 16.Ne3
Nh5 17.Kh2Qd6 18.Rad1 Qc7 19.Nf3 f6
20.Ne1 Ba7 21.Bf3 Ng7 22.Bg4 Nc5
23.Bxc8 Raxc8 24.Ng4 Nh5 25.Nd3 Ne6**



26.Ndxe5! fxe5 27.Bxe5 1-0 after black moves his Queen white wins by 28.Nh6+ Kf8 29.Qf3+

10. John Cooper 1979-82

Nottinghamshire County Champion 1968 , 1969 , 1970 , 1974
Nottinghamshire U14 Champion 1957
Honorary Life Vice-President

President 1979-82	(3)	
1 st Team Captain 1969-77	(8)	
MCCU Delegate 1969-70, 1971-77	(7)	
County Champ 1978-79	(1)	
Correspondence 1981-84	(3)	
LMC 1976-79	(3)	Total 25

J G Cooper (Notts) – J H McLardy
(Merseyside) , Ward-Higgs 1984-85

Notes by John Cooper (lightly edited)

**1.e4 Nf6 2.e5 Nd5 3.d4 d6 4.c4 Nb6
5.f4** Taking up the challenge of the four pawns attack instead of the quieter Exchange variation (5.exd6) **5...dxe5
6.fxe5 Nc6 7.Be3 Bf5 8.Nc3 e6 9.Nf3 Be7**

Black has several alternatives here, including 9...Bg4, Bb4, Qd7 and Nb4 but the text envisages f6 after K-side castling

10.d5 exd5 10...Nb4 11.Rc1! f6 12.a3 Na6 13.g4! is Velimorovic – Gipslis, Havana 1971 **11.cxd5 Nb4 12.Nd4 Bd7** My opponent told me afterwards that he thought he was the first to try this move way back I 961 against Tom Casswell. The alternatives 12...Bg3 and 12...Bc8 allow

13.Bb5+ **13.e6 fxe6 14.dxe6 Bc6 15.Qg4**
Bh4+ 16.g3



16...Bf6 This move may be inferior to 16...Bxh1 17.O-O-O Qf6 (17...Bf6 transposes into the game) 18.gxh4 O-O but white appear to have good compensation after 19.Be2 with threats of Bg4 and e7 in the air **17.O-O-O** stronger than 17.Nxc6 Nc2+ 18.Ke2 bxc6 as played in the Casswell-McLandy game **17...Bxh1 18.Nf5 Qxd1+** After 18...N4d5 Williams won neatly against Cafferty in 1971 after 19.Nxg7+ Bxg7 20.Qh5+ Ke7 21.Bc5+ Kxe6 22.Bh3mate **19.Qxd1** At last we are out of the book! Although black can now castle (19...Rd8 loses to 20.Nxg7+ as in the Williams-Cafferty game) he cannot coordinate his pieces together and I felt I had a winning advantage in my well placed queen, minor pieces and e-pawn.

19...O-O 20.e7 Rfc8



This looks ugly but 20...Rfe8 allows 21.Qb3+, whilst 20...Rf7 21.is met by 21.Bxb6 and Bc4_

After the text move, if white now plays 21.Bxb6 cxb6 22.Qb3+ Nd5 gives black some chances after 23.Bc4 Rc5 or 23.e8=Q+ Rxe8 24.Nxd5 Bxd5 25.Qxd5+ Kh8 because black has finally freed his rooks.

I felt there must be a forced win here and, after considerable analysis, suddenly realised that there is one after

21.Qg4 N6d5 22.Nh6+ Kh8 23.Nf7+ Kg8
24.Qe6 Nxe7 24...Bxe7 leads to the same fate. Mate could be avoided by 24...h6 but only with disastrous loss of material
25.Nh6+



1-0 25...Kh8 26.Qg8+ Rxf8 27.Nf7mate

11. Ron Clunie 1982-85

Nottinghamshire County Champion	1980 , 1983	
President 1982-85	(3)	
Adjudications Sec 1975-76	(1)	
ECF Delegate 1980-81	(1)	
Congress Dir 1985-86	(1)	
League Sec 1987-89	(2)	
Secretary 1976-79, 1991-93	(5)	
LMC 1989-91	(2)	Total 15

Clunie,Ron - Burke,Steven J

Sutton v West Bridgford,

11.02.1986

[Steve]

**1.Nf3 c5 2.c4 Nc6 3.Nc3 g6 4.g3
Bg7 5.Bg2 e5 6.0-0 Nge7 7.d3 0-0
8.Ne1 d6 9.Nd5 Nxd5 10.cxd5
Ne7 11.Nc2 f5 12.e3 b5 13.d4
cxd4 14.exd4 e4 15.f3 exf3
16.Qxf3 Bb7 17.Qb3 a5 18.Re1
Qd7 19.a3 Rac8 20.Bg5 Rfe8
21.Re2 a4 22.Qa2 h6 23.Be3 Kh7**

24.Rae1 Ng8 25.h3 Nf6 26.Nb4

Ne4 27.Kh2 g5 28.Bg1 Nf6 29.Re6



**Rc4?? [29...Ne4=] 30.Qb1 Bc8
 31.Qxf5+ Kg8 32.Qg6 Rxe6
 33.dxe6 Qe8 34.Qxe8+ Nxe8
 35.Bc6 Rxc6 36.Nxc6 Nc7 37.Ne7+
 Kf8 38.Nxc8 1-0**

12. Neil Graham 1985-88



President	1985-88	(3)
Team Lightning	1970-73	(3)
Publicity Officer	1972-73	(1)
Junior Secretary	1972-75	(3)
Jamboree	1979-84	(5)
U18 Team	1980-84,1993-98	(9)
2 nd Team Captain	1988-91	(3)
U175 Captain	1992-93	(1)
U150 Captain	2001-08	(7)
U125	2005-06	(1)
4NCL	2005-06	(1)
U140 Captain	2009-12	(3)

U160 Captain	2012-13	(1)
U180 Captain	2012-13	(1)
Match Secretary	2013-19	(6)
Special Events	2005-06	(1)
EC	2006-15	(9)
Total		58
Nottingham Congress Controller / Chief Controller 1976-2016 41		
British Junior Correspondence Champion 1970		
BCF Congress Director 1997-2004		
ECF Honorary Life Vice President		
MCCU Newsletter Editor 1975-78		
MCCU Secretary 1980-89		
MCCU Chief Executive 1989-98		
MCCU Vice President		

N.Graham – P.Burrows , Best Game Prize
1996 (Notes by Andrew Walker)

1.d4 d5 2.e4 dxe4 3.Nc3 Nf6 4.f3 exf3
5.Nxf3 e6 ?! Um! 5...Bf5 is the “official”
line. **6.Bg5 Be7 7.Qd2 Nc6 8.Bd3 b6** Not of
course 8...Nxd4?? 9.Nxd4 Qxd4 10.Bb5+
but I would think of castling fairly
urgently **9.O-O-O Nb4** This really is
messing around **10.Bc4 Bb7 11.Ne5**
Nd7 Black misses his last chance to castle



12.Nxf7! Bravo. Fully correct. **12...Kxf7**
13.Bxe6+! Kf8 Not 13...Kxe6 14.Rde1+

picking up the Bishop on e7. 13...Ke8
14.Bxe7 Qxe7 15.Rde1 is even better than
the game. 13...Kg6 may be best despite
appearances. Eg 14.Bxe7 Qxe7 15.Rde1
Qg5 16.Bxd7 Qxd2+ 17.Kxd2 Rad8
14.Bxe7+ Qxe7 15.Rhf1+ Nf6 16.Rde1
Re8 If 16...c6 17.Bc4 Qd7 18.Qg5 Qxd4
19.Re7! **17.a3 Na6 17...Ba6!?**



18.Bd5 Qxe1+ 19.Rxe1 Rxe1+ 20.Qxe1
Nxd5 21.Nxd5 Bxd5 22.Qf1+ Crunch! Ke7
23.Qxa6 Kd6 24.Qe2 Rg8 25.c4 Bf7
26.Qe5+ Kd7 27.d5 g6 28.Qf6 1-0

13. Norman Lazonby 1988-91

President 1988-1991	(3)
Treasurer 1981-86, 1996-97	(6)
ECF Delegate 1981-86	(5)
Congress Director 1986-90	(4)
1 st Team Captain 1992-97	(5)
Junior Committee 1991-92	(1)

Total 24

N.Lazonby – B.A.Jones (198) Rd2
Nottingham Congress Premier,
1984

1.e4 d6 2.d4 Nf6 3.Nc3 g6 4.Be2
Bg7 5.Be3 c6 6.Qd2 b5 7.f3 Nbd7
8.g4 Nb6 9.Bh6 Bxh6
10.Qxh6 Black must now castle

long but the game demonstrates white's attack is just as dangerous on the queen's wing **Qc7 11.Nh3 Be6 12.b3 O-O-O 13.a4 b4 14.a5! Na8 Better is 14...bxc3 15.axb6 axb6** when white picks up the pawn on c3 to retain a small advantage. After the move played the pawn on b5 is weak and proves to be black's downfall **15.Nd1 c5 16.d5 Bd7 17.c3 Qb7 18.O-O Nc7 19.Qd2 h5 20.N3f2 hxg4 21.fxg4 Rh4 22.h3 Rdh8 23.Kg2 Nfe8** Black tries to create time for f5 but white's attack gets there first **24.cxb4 cxb4 25.Ne3 Ng7 26.Rfc1 f5** The move has little potency **27.Rc4 f4 28.Nc2 Bb5 29.a6 Qb6 30.Rxb4** The vital pawn

has now fallen and black's queen's side is in ruins **f3+ 31.Bxf3 Nxa6**



32.Rxb5 A nice combination neatly finishes the game off **Qxb5 33.Be2 Qxb3 34.Nd4 Qb6 35.Rxa6 Qb7 36.Qc3+ Kb8 37.Nc6+ Kh8 38.Qa5**
1-0

14. Alan Morrey 1991-94

Honorary Life Vice-President

President 1991-94	(3)	
3 rd Team Captain 1980-81	(1)	
2 nd Team Captain 1981-86	(5)	
1 st Team Captain 1986-92	(6)	
LMC 1986-92, 2000-02	(8)	
ECF Delegate 1992-95	(3)	
MCCU Delegate 1992-95	(3)	
Bulletin Editor 1992-00	(8)	
Records Secretary 1994-00	(6)	
County Champ 1997-99, 2005-06	(3)	Total 46

A.Morrey – S.Wadsley , 7/1/1998

1.e4 e6 2.f4 a6 3.Nf3 b5 4.d4 c5
5.c3 Bb7 6.Bd3 Nf6 7.e5 Nd5 8.O-O
Be7 ? 9.Ng5



9...Bxg5 9...Nxf4 10.Nxf7! 10.fxg5 O-
O 11.Qh5 g6 12.Qh6 Nc6 13.Rf3 f5
14.gxf6ep Rf7 15.Bxg6 hxg6
16.Qxg6+ Kf8 17.Bh6+ Ke8 18.Qg8+
1-0

15. Dr. John Swain 1994-97



President 1994-97	(3)
Bulletin Editor 1988-90	(2)
LMC 1989-94, 1997-2002	(10)
Special events 1990-97	(7)
Blitz 2005-06	(1)
Schools Liaison 1993-96	(3)
U14 Team 1994-95 , 1996-97	(2)
Junior Committee 2016-19	(3)
Total	(31)

Congress Controller / Chief Controller

John Swain - Nigel Donovan,
Cambridge City vs South Cambs,
1984

**1.e4 e5 2.f4 exf4 3.Nf3 d6 4.d4
g5 5.h4 g4 6.Ng1 Bh6 7.Nc3 c6
8.Nge2 Qf6 9.g3 f3 10.Nf4 Ne7**



11.e5 dxe5 12.Ne4 Qg7 (12...Qf5

**13.Nd6+) 13.Nh5 Qg6 14.Nhf6+
Kf8 15.h5 f2+**



16.Ke2 Not 16.Kxf2 Qf5+ Qg7

17.dxe5 Nd5 If 17...Nd7 18.Qd6

is strong **18.Nxd5 cxd5 If**

18...Qxd5 19.Bxh6+ **19.Qxd5 Nd7**

20.Qd6+ Ke8 21.Bxh6 1-0

16. Brian Hayward 1997-00



Honorary Life Vice-President

President 1997-2000	(3)
Registration Sec 1985-86	(1)
Grader 1986-2011	(25)
MCCU Delegate 1986-06	(20)
ECF Delegate 1998-01	(3)
Total	52

Brian Hayward – Peter Merchs ,
County Championship, Rd2 ,
2004

1.b4 Nf6 2.Bb2 g6 3.Nf3 Bg7
4.e3 O-O 5.Be2 d6 6.d4 a5 7.b5
Nbd7 8.O-O c6 9.c4 cxb5 10.cxb5
b6 11.Nc3 Bb7 12.Rc1 e5 13.Ba3
e4 14.Nd2 Qe7



15.Nc4 Ne8 16.Na4 Rd8
17.Naxb6 Nxb6 18.Nxb6 Qe6
19.Qd2 f5 20.Qxa5 Rf7 21.d5
Qf6 22.Rc2 g5 23.Rd1 Qh6
24.Nc4 Ra8 25.Qb4 Bf8 26.Bb2
Rc8 27.a4 Nc7 28.Nb6 Rb8 29.a5
Na8 30.Nxa8 Bxa8 31.b6 Be7
32.Rc7 Bd8 33.Rxf7 Kxf7 34.Qb5
Rb7 35.Qa6 Rb8 36.Qa7+ 1-0

17. Michael Nailard 2000-03



President	2000-03	(3)
U150 Captain	1992-98	(6)
LMC	1996-00	(4)
U125 Captain	2002-03	(1)
MCCU Delegate	2000-03	(3)
Total		17

B.Briscoe (Warks) – M.Nailard
(Notts) U150 Final, 1997

1.e4 g6 2.d4 Bg7 3.c3 c6 4.Nf3
d6 5.Bd3 Nf6 6.O-O O-O 7.Re1
Bg4 8.Nbd2 Qc7 9.h3 Bxf3
10.Nxf3 e5 11.dxe5 dxe5 12.Qc2
Nbd7 13.Bg5 h6 14.Bxf6 Nxf6
15.Rad1 b5 16.c4 b4 17.Bf1 a5
18.Rd2 Rfd8 19.Red1 Ne8 20.g3
Nd6 21.Bg2 Nb7 22.h4 Rxd2
23.Rxd2 Rd8 24.Ne1 Nc5 25.Qd1
Bf6 26.Nc2 Rxd2 27.Qxd2 Qd8
28.Qxd8+ Bxd8 29.Kf1 Nd3
30.b3 Bb6



31.f4 exf4 32.gxf4 Nxf4 33.a3
Nd3 34.axb4 axb4 35.Bf3 Bc5
36.Ne1 Ne5 37.Bd1 Be7 38.h5
Kg7 39.Kg2 Kf6 40.hxg6 fxg6
41.Nf3 c5 42.Nh2 Kg5 43.Nf3+
Kf4 44.Nxe5 Kxe5 45.Kf3 h5
46.Ke3 Bg5+ 47.Kf3 Bf4 48.Bc2
g5 49.Kg2 g4 50.Bd1 Kxe4
51.Bc2+ Ke5 52.Bg6 h4 53.Bf7
Kd4 54.Be6 Kc3 55.Bxg4 Kxb3
56.Be2 Kc2 57.Kh3 Bg3 58.Bd3+
0-1

18. Michael Barnes, FM 2003-06 & 2009-10

Nottinghamshire County Champion 1992, 2004, 2005, 2011, 2012, 2014

President 2003-06, 2009-10	(4)	
Secretary 1989-91,1993-95	(4)	
LMC 1995-96	(1)	
League Secretary 1996-99, 2000-01	(4)	
Records Secretary 2000-01, 2002-04	(3)	
Handicap Tournament 2006-07	(1)	
ECF Delegate 2003-04	(1)	
MCCU Delegate 2003-05	(2)	Total 20

19. David Levens 2006-09



Honorary Life Vice-President

President 2006-09	(3)
1 st Team Captain 1999-00	(1)
4NCL Captain 2009-12	(3)
Publicity 1998-02, 2004-2017	(17)
U180 Captain 2010-12	(2)
Bulletin Editor 2009-10	(1)
EC 2010-13	(3)
LMC 2011-14	(3)
Schools Liaison 2005-17	(12)
Junior Committee 2016-19	(3)
Total	48

BCF Director of Marketing [Correct title?]

[Dates]

David Levens – Xi-Yang Guo , Major Open
2007

1.e4 g6 2.d4 Bg7 3.Be3 d6 4.Nc3
a6 5.f4 b5 6.a3 Bb7 7.Nf3 Nd7
8.e5 e6 9.Bd3 Bxf3 10.Qxf3 d5
11.O-O h5



12.f5!! gxf5 13.Bxf5 Qe7 14.Nxd5
exd5 15.Qxd5 Nb6 16.Qc6+ Kd8
17.d5 1-0

20. Robert Richmond 2010-13



Nottinghamshire U18 Champion 1972
Nottinghamshire U14 Champion 1971

President 2010-13	(3)
Treasurer 2005-2010	(5)
League Sec 2007-09	(2)
County Championship 2008-19	(11)
Congress Director 2006-19	(13)
ECF Delegate 2006-2019	(13)
MCCU Delegate 2005-06,2007-19	(13)
EC 2013-19	(6)
Total	66

BCF/ECF Finance Director 2003-08

Robert Richmond – Glen Halfpenny, WB1-Ashfield 1 , Best Game Prize 2006

1.d4 d5 2.c4 e6 3.Nc3 Be7 4.Bf4 this Bishop is going to be powerful, controlling the c7 and b8 squares **Nf6 5.e3 O-O 6.Rc1 c6 7.Nf3 Nbd7 8.h3 Qa5 9.Qb3** better than Qc2_avoiding the possibility of the discovered check after dxc4 Bxc4, b5,b4,b3 **Ne4 10.Bd3 Nxc3 11.bxc3 a6 12.O-O b5 13.c5** Neither pawn capture promise much, and I judged the e5 break by black to be “difficult” **f5 14.Ra1! Bb7 15.a4 Qd8 16.axb5 axb5**



17.C4!! g5 18.Bh2 g4 19.hxg4 fxg4 20.Ne5 Bf6 Hoping for 21.Nxg4? Nxc5! **21.Nxd7 Qxd7 22.cxb5 cxb5 23.Bxb5 Bc6 24.Bxc6 Qxc6 25.Qb6 Rac8 26.Ra6 Qxb6 27.cxb6 Rf7 28.Ra7 Rxa7 29.bxa7 Kf7?** 29...Ra8 30_Bb8 is pretty, but it may be quicker to play the Bishop round to c5 **30.Bb8 1-0**

21. Tim Walker 2013-15

President 2013-15	(2)	
LMC 2009-13	(4)	
MCCU Delegate 2012-19	(7)	Total 13

Edward Deering – Tim Walker , East Anglian Open Championship, 1994

1.d4 Nf6 2.c4 e6 3.Nc3 Bb4 4.a3 Bxc3+ 5.bxc3 O-O 6.e3 b6 7.Qc2 Bb7 8.f3 c5 9.Bd3 Nc6 10.Ne2 Rc8 11.Bd2?! Na5 =+ 12.Qa2 Not

perhaps what white wanted to play , but other moves immediately drop a pawn **Ba6 13.e4 d5 14.e5 dxc4**

The only way to play it, but leads to a definite advantage. **15.Bc2 Nd5 16.Qb1 h6 17.O-O**



Here and on the next move, apparently my pieces are so well placed (I don't often manage this) that I have the more elegant ...Nb3, which I only saw after the game. **17... Qc7 17...Nb3! -+ 18.Qe1**

Qe7 19.Qg3 Kh8 20.Nf4 Nxf4

21.Bxf4 cxd4 22.cxd4 g5!? Perhaps too sharp – but at least this provides some entertainment after all! Now I have to an extent to win the game again, with the help of a textbook defensive manoeuvre on move 24-25



23.Qh3 Kg7 24.Qg4 Rg8 25.h4 Kf8

26.Be3 c3 27.Rfe1 Nc4 Better again

and the next moves tread the narrow and right path. **28.Qh5 Nxe3**

29.Qxh6+ Ke8 30.Rxe3 gxh4 31.d5

Qg5 32.Qxg5 Rxg5 33.dxe6 fxe6

34.Kf2 Rc5 35.f4 Rg4 36.Kf3 Rg7

Most accurate. With the deadly long-range threat of Bb7. White

now has no defence. **37.Rd1 Bb7+**

38.Be4 c2 39.Rc1 Bxe4+ 40.Rxe4
Rg3+ 41.Kf2 Rxa3 42.Re2 Rac3
43.Re3 b5 44.Ke2 Rxe3+ 45.Kxe3 b4
46.Kd4 Rc7 47.f5 exf5 48.Kd3 b3
49.Kd2 Kd8 50.e6 Ke7 51.g3 hxg3
52.Rh1 c1=Q 0-1 A minor link to

this century came later: 10 years after this game , Edward Deering published his well-received book “Winning with the Nimzo-Indian Defence”

22. Shane Bhayat 2018-

President 2018-19	(1)	Total 1
-------------------	-----	---------